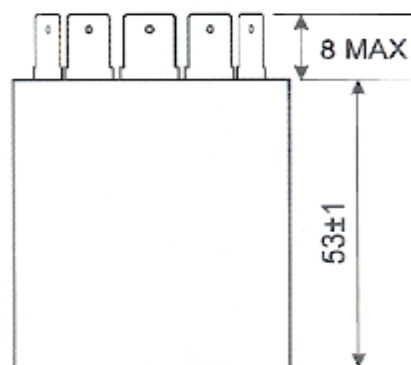
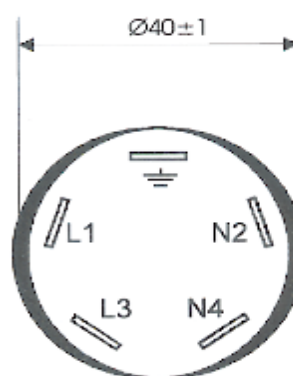
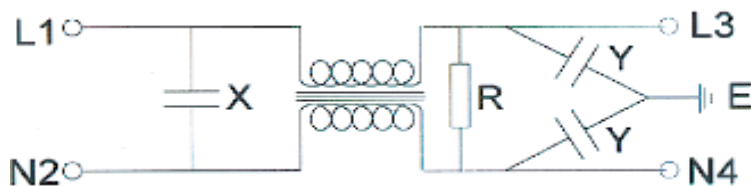


These mains filters are specially designed for suppressing mains transients and switching pulses.

A twin choke wound on a high permeability ring core coupled with X and Y class capacitors very effectively attenuate with the symmetrical and asymmetrical components of interference over a wide range of frequencies.

SPECIFICATION

| | |
|---------------------|-----------------------|
| Capacitance X | 10 nF - 470 nF |
| Capacitance Y | 1 nF - 10 nF |
| Resistor | 680 K |
| Voltage Rating | 250 V RMS (50/60 Hz) |
| Current Rating | 1 - 13 Amps |
| Temperature Range | -25°C to +85°C |
| Climatic Category | 20/85/21 |
| Typical Attenuation | 40db |
| Leakage Current | < 2 x 0.8 mA |
| Housing | Plastic |
| Termination | 6.3 mm Faston Tags |
| Approvals | BS, EN, ISO 9001-2008 |



ALL DIMENSIONS ARE IN mm

Available with plain base, studded base or with a fixing bracket.